



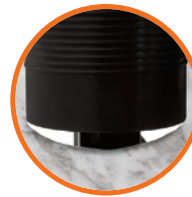
**VDMG2**  
Power Tower



Press and pop power tower with wireless charging function, USB A & USB C charging ports and multiple socket outlets for the perfect solution in one unit. The eye-catching glass top finish with blue LED power indication brings elegance and practicality to any location. Common applications include kitchens and offices where accessibility and tidiness are more than just a solution but rather a requirement. It makes wireless charging of smartphones simple by using induction technology built into the top of the power tower which is available when the tower is in both the up and down position. Smartphones must be compatible with wireless charging.

The 8 sockets are arranged so the plug tops do not interfere with one another allowing for all outlets to be used simultaneously. The 2 USB A and 2 USB C charging sockets are ideal for tablets, smartphones and the like. Using the simple push function, the sockets can be raised powerlessly from the tabletop and pushed down out of site when not in use. Installation is quick and simple by tightening the ring nut below the counter when the VDM is mounted in the 121mm cut out.

## Features



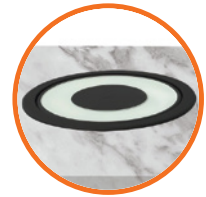
121mm Cut Out  
Max Depth of 180mm



Simple & Fast Installation



Convenient Wireless Charging



Flush with Counter Tops



Press & Pop System  
for Ease of use



Compact Height with  
more Socket Solutions



Socket Direction for  
Easy Plug In & Removal



Simultaneous Usage

**VDMG2** | **Wireless Charging Pop Up Power Tower**

**Contact Us**  
**South Africa**

[www.major-tech.com](http://www.major-tech.com) [sales@major-tech.com](mailto:sales@major-tech.com)

**Australia**

[www.major-tech.com.au](http://www.major-tech.com.au) [info@major-tech.com.au](mailto:info@major-tech.com.au)