



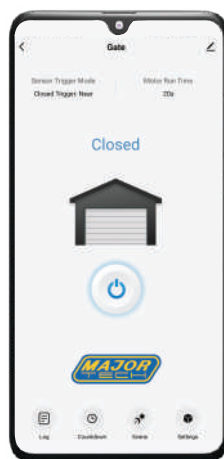
MTS13 Smart Controller Module

Unlock the future of convenience with our Smart Entry Controller Module! Designed to seamlessly integrate into your home, this versatile device operates on voltages ranging from 100 to 240V AC 50/60Hz, ensuring compatibility with a wide range of setups. Featuring Dual Mode Wi-Fi and Bluetooth 5.2 communication, you'll experience reliable connectivity whether you're near or far. Plus, with an IP20 rating, rest assured your device is protected against dust and small particles. But that's not all! Take full control of your garage or gate with our intuitive Major Tech Hub Smart App. Open and close your garage door or gate with a tap of your finger, receive real-time alerts on activity, and even schedule automatic routines for added convenience. Upgrade your home and simplify your life with our Smart Garage Entry Controller Module today!

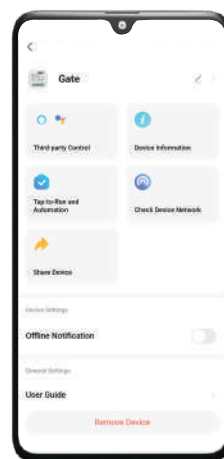
Features

- **Timing Options:** Enjoy precise control, with versatile timing options, including Schedules, Run Time settings and more.
- **Compact Form Factor:** Designed with a compact form factor (Size: 46x46x18mm) and mounting bracket to allow for easy installation into junction boxes, behind existing switches, or on ceilings/walls.
- **Included Accessories:** Wired contact sensor, module mounting bracket, sensor mounting brackets, 4.5m extension cable for sensor, and installation fixings.
- **Dual Mode Connectivity:** Always stay connected as the MTS13 automatically and seamlessly switches over to Bluetooth, for local control, if the Wi-Fi connection is lost or becomes unavailable.
- **Warnings and Alerts:** This feature allows you to choose to be notified every time the sensor detects that the door or gate has been opened or closed, and allows you to set a reminder & timeout period to notify you if you have forgotten to close within the selected time period.
- **Customisable Sensor Modes:** This feature allows you to configure how the wired contact sensor detects the closed position.
 - **Closed Trigger Near:** The sensor will report as closed when the two parts of the sensor are close enough together to trigger the sensor.
 - **Closed Trigger Apart:** The sensor will report as closed when the two parts of the sensor are separated.
- **Voice Control:** Compatible with Alexa and Google Assistant

Function	Range
Voltage	100-240V AC
Frequency	50/60Hz
Wireless Connections	Wi-Fi 2.4GHz 802.11 b/g/n Bluetooth 5.2(BLE/BLE2)
Run Time	1 to 120 Seconds
Operating Temperature	-10°C to 40°C
Operating Range	<200m
Module Dimensions	46 x 46 x 18mm
IP Rating	IP20



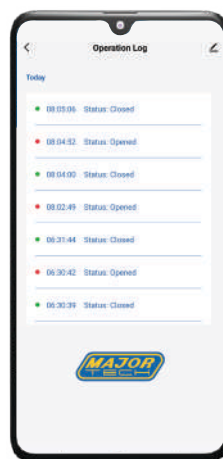
Control Panel



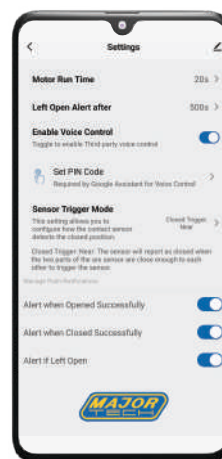
Device Detail Page



Countdown



Operation Log



Settings



MTS13 | **Smart Entry Controller Module**

**Contact Us
South Africa**

www.major-tech.com sales@major-tech.com

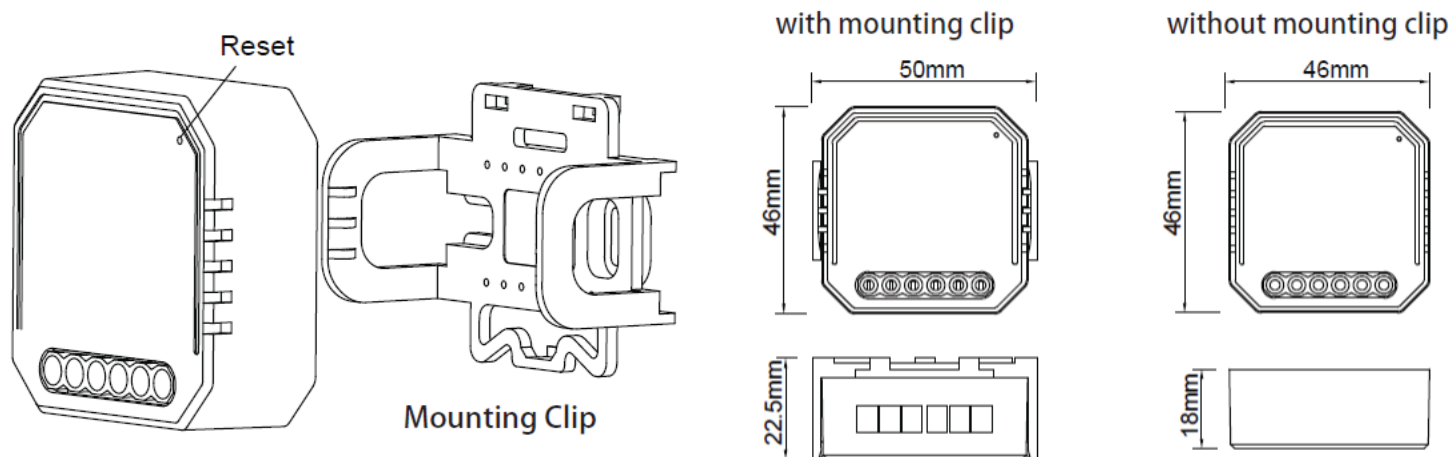
Australia

www.majortech.com.au info@majortech.com.au

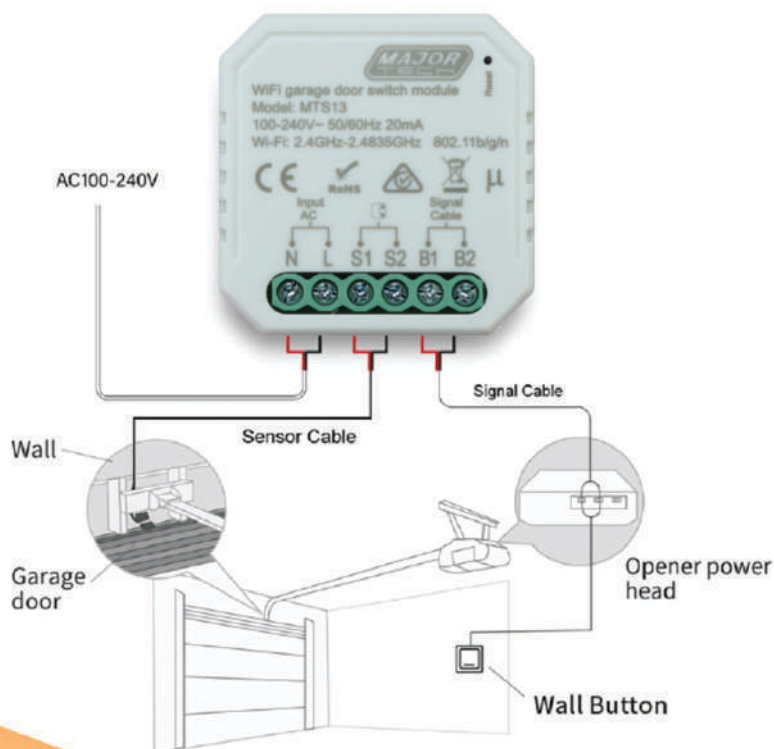


MTS13 Smart Controller Module

Product Dimensions:



Wiring Diagram:



MTS13 | **Smart Entry Controller Module**

Contact Us
South Africa

www.major-tech.com sales@major-tech.com

Australia

www.majortech.com.au info@majortech.com.au